

**** Not ai-vailable****** Fxxx stamped****** 71/73 - Propaganda issue of the world exhibition in Brussels - Small sheets (F): F71►F73****1896****Date of issue: 15/11/1896****Out of use: 1/7/1898****Paper: KP: machine colored paper****Press. procedure: Typography****Dimensions: ± — stamp: 26,5 x 36,8mm; (without strip): 26,5 x 31mm;
— F-formats: 160x 220mm****Perforation: 14.**

© bpost

****F71 : see page 3****F72 : see page 4******F73 : see page 5****** 84/91 - Caritas - TBC : St-Maarten - TBC - 2 types: - Small sheets (F): F84 ►F91****1910****Date of issue: 1/06/1910****Out of use: 31/01/1912****Press. procedure: Typography — paper: DP-P1****Dimensions: ± — stamps: 26,5 x 36,8mm; (without strip): 26,5 x 31 mm;
— F-formats; 160x 220mm****Perforation: 14.**

© bpost

****F84 : see page 6****F85 : see page 7******F86 : see page 8****F87 : see page 9****F88 : see page 10****F89 : see page 11****F90 : see page 12****F91 : see page 13****** 92/99 - Caritas - TBC : St-Maarten - Type Montald (lined backgr. - overprint "1911" - F92-F94-F96-F98****1911****** 92/99 - Caritas - TBC : St-Maarten - Type Lemaire (plain backgr. - overprint "1911") - F93-F95-F97-F99****Date of issue: 15/04/1911 and specific dates****Out of use: 31/01/1912****Press. procedure: Typography — paper: DP-P1****Dimensions: ± — stamps: 26,5 x 36,8mm; (without strip): 26,5 x 31mm;
— F-formats: 160x 220mm****Perforation: 14.**

© bpost

F92 : see page 14**F93 : see page 18******F94 : see page 15******F95 : see page 19****F96 : see page 16****F97 : see page 20****F98 : see page 17****F99 : see page 21**

Small sheets (F)

J1849-J1919

© bpost

(Info: part 2)

100/107 - Caritas - TBC : St-Maarten - Type Montald (opdruk «CHARLEROI 1911») - 1911
F100-F102-F104-F106

**** 100/107 - Caritas - TBC : St-Maarten - Type Lemaire (opdruk «CHARLEROI 1911») - 1911**
F101-F103-F105-F107

Date of issue: 20/05/1911 and specific dates

Out of use: 31/01/1912

Press. procedure: Typography — paper: DP-P1

Dimensions: ± — stamps: 26,5 x 36,8mm; (without strip): 26,5 x 31mm;
— F-formats: 160x 220mm

Perforation: 14.

F100 : see page 22

****F101 : see page 26 echter ▶ **F101 gestempeld**

F102 : see page 23

F103 : see page 27

F104 : see page 24

F105 : see page 28

F106 : see page 25

F107 : see page 29

© bpost

**** 122 - Large portrait of King Albert I: Large format - F122 1912**

Date of issue: 15/04/1912

Out of use: 31/01/1912

Press. procedure: Typography — paper: DP-P1

Dimensions: ± — stamp: 26,5 x 37,5mm; (without strip): 20 x 26,3mm;
— F122: ?

Perforation: 14.

****F122 : see page 30**

© bpost

**** 126/128 - The Red Cross: F126-F127-F128 1914**

Date of issue: 3/10/1914

Out of use: 14/08/1920

Press. procedure: Lithography — paper: DP-P1

Dimensions: ± — stamps: 27 x 36,8mm;
— F126/F128: ±168 x 225mm

Perforation: 14.

****F126 : see page 31**

F127 : see page 32

****F128 : see page 33**

© bpost

(Info: dpart 3)

**** 132/134C -For the benefit of the Red Cross: picture of King Albert I in medallion : 1915**
F132-F133-F134

Date of issue: 1/01/1915

Out of use: 14/08/1920

Press. procedure: Lithography — paper: DP-P1

Dimensions: ± — stamps: 27 x 36,8mm;
 — F-formats: ±185 x 215mm

Perforation: 14.

****F132 : see page 34******F133 : see page 35****F134 : see page 36**

© bpost

**** 164/164A - Platform in Liège: F164A & F164B 1919**

Date of issue: 19/07/1919 and specific dates

Out of use: 30/04/1931

Press. procedure: Engraving — paper: DP-P1

— 2nd Edition: 22,1 x 31,5mm (image: 18¼ x 28½);

Dimensions: ± — 1ste Edition: 22,3 x 30,5mm (image: 18½ x 28);

— F-formats: 160 x 110mm

Perforation: 11½ x 11

F164A : see page 37****F164B : see page 38**

© bpost

**** 165/178 - KKing Albert I with helmet - F168A & F169A - F175 ► F178 1919**

Date of issue: 19/07/1919 and specific dates

Out of use: 30/04/1931

Press. procedure: Copper Engraving — paper: DP-P1

Dimensions — 165/166: 20 x 24,3mm;

— 167/176: 26,5 x 28,5mm;

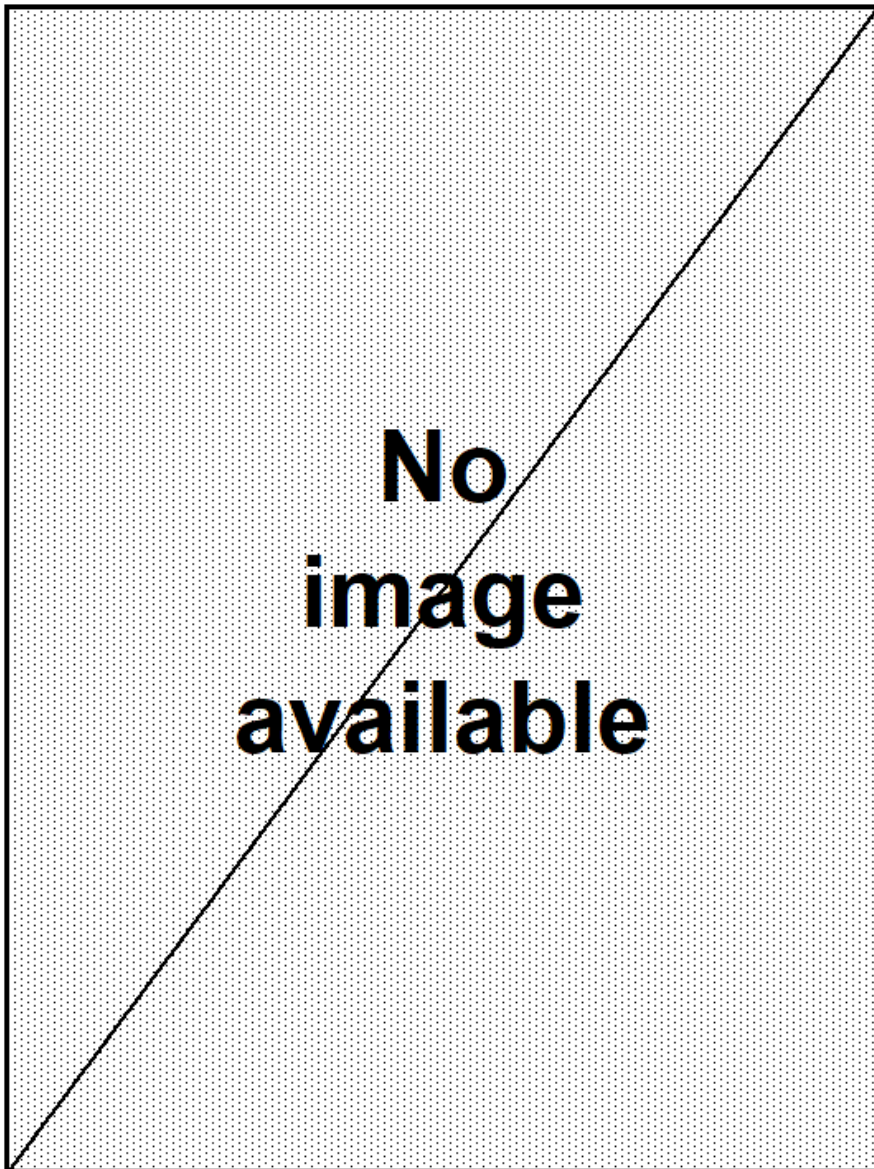
Dimensions of — F168A+F169B+F175: 190 x 185mm;
 small sheets (F): — F177+F178: ?

Perforation: 11½ x 11

F168A : see page 39**F169A : see page 40****F175 : see page 41******F176 : see page 42******F177 : see page 43******F178 : see page 44**

© bpost

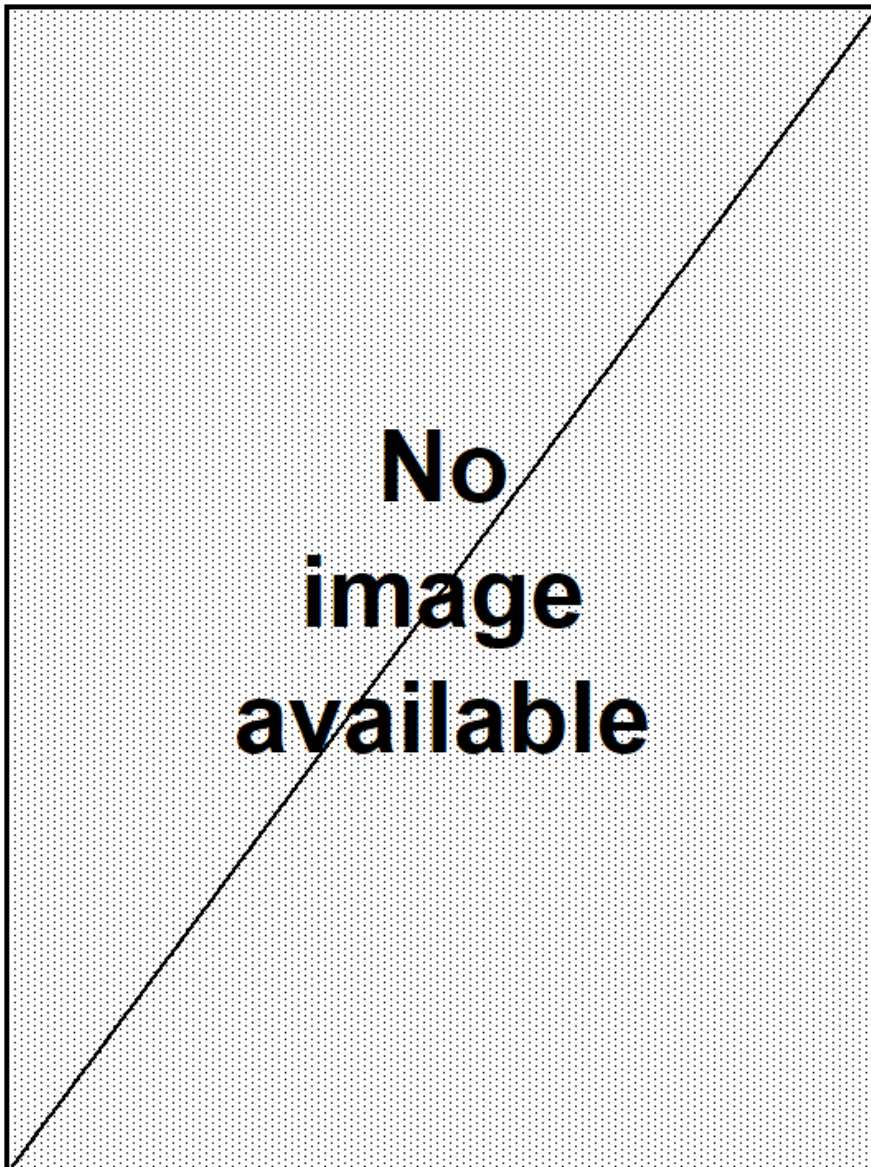
****F71**



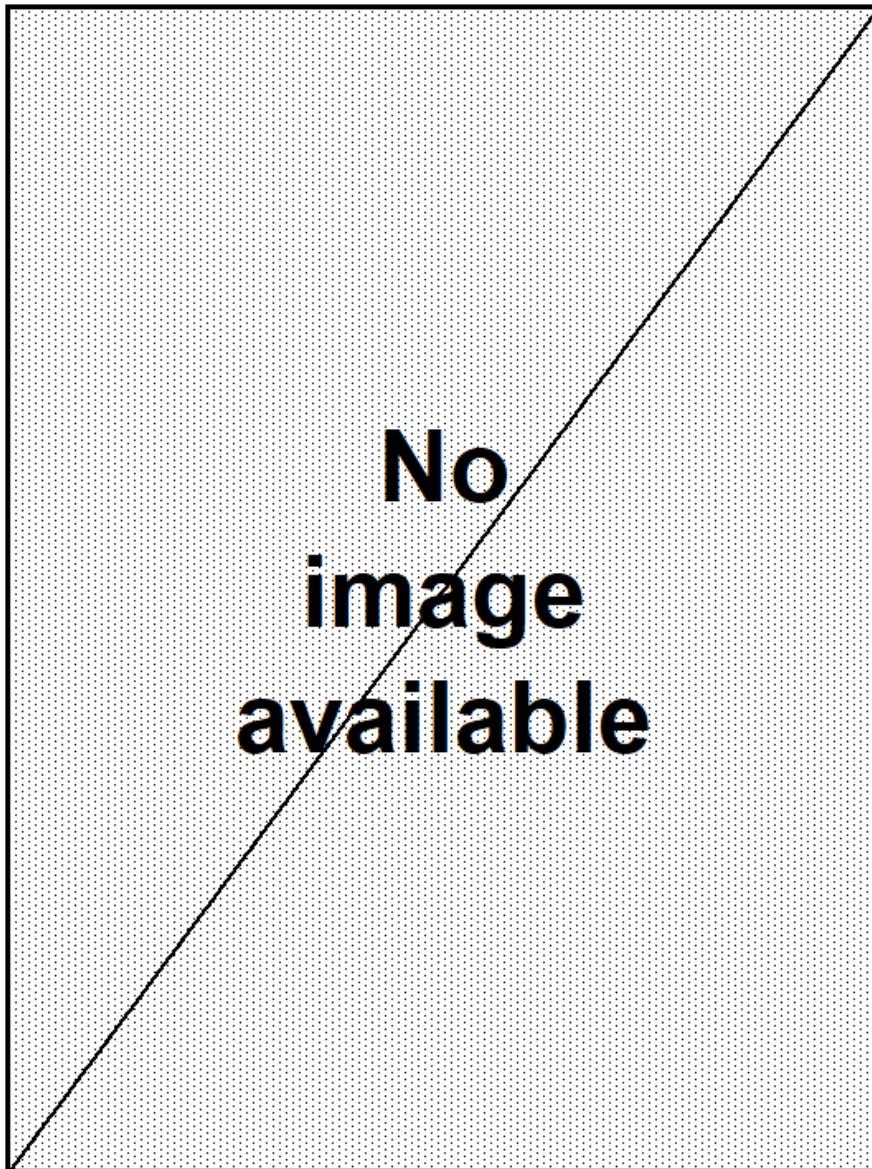
F72



****F73**



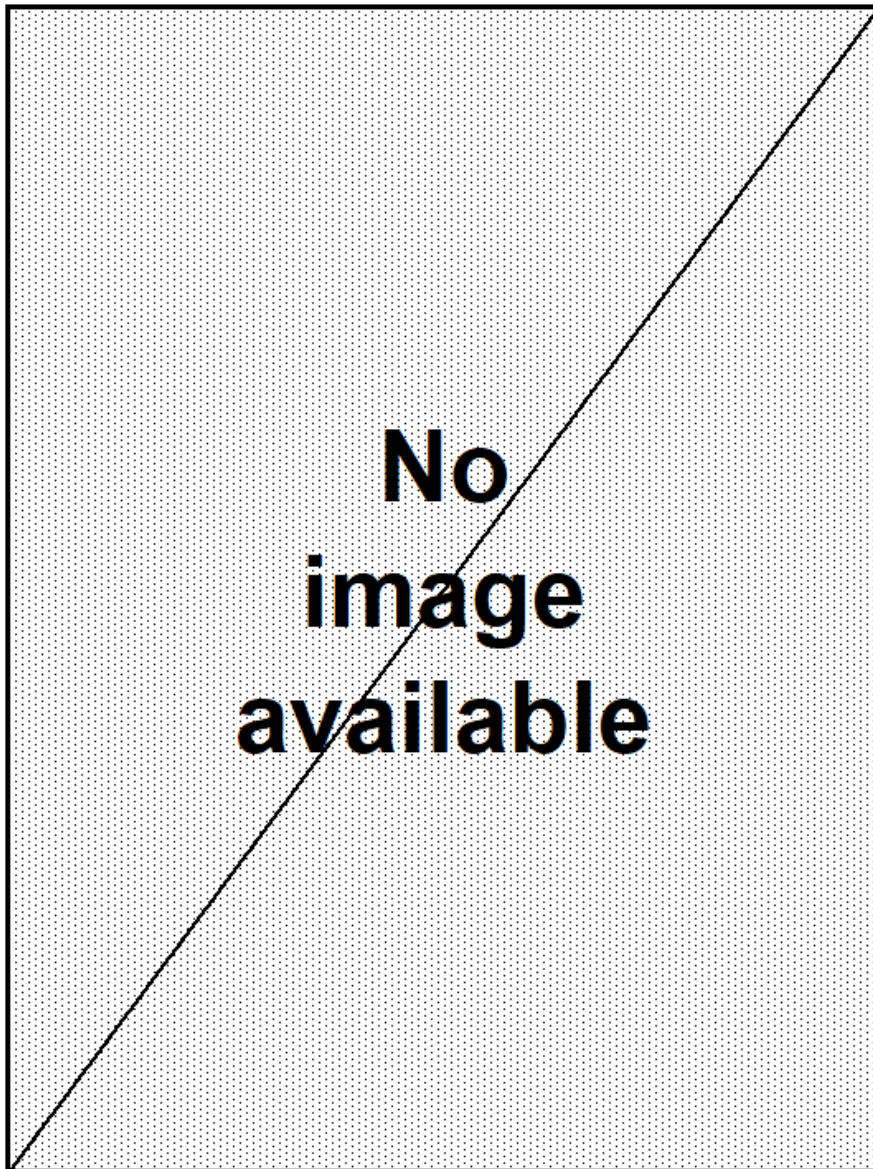
****F84**



F85



****F86**



F87



F88



F89



F90



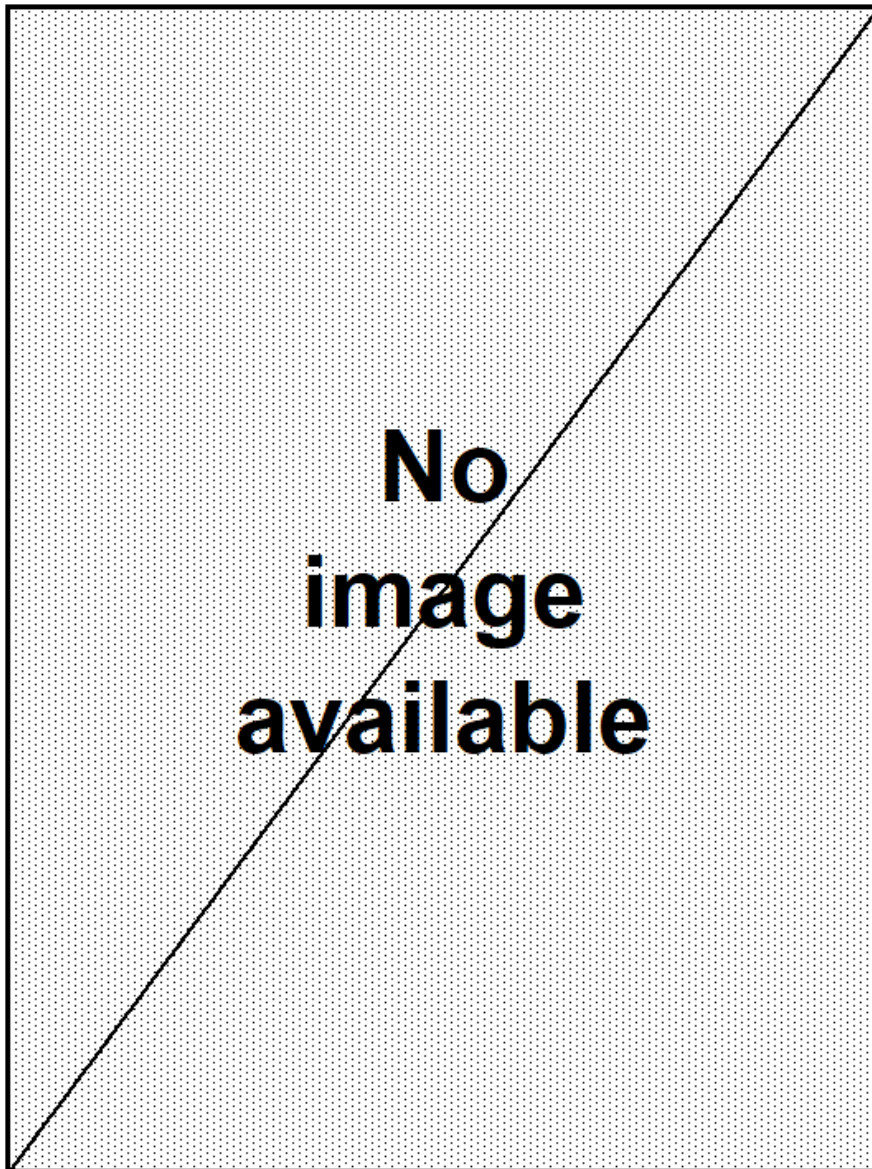
F91



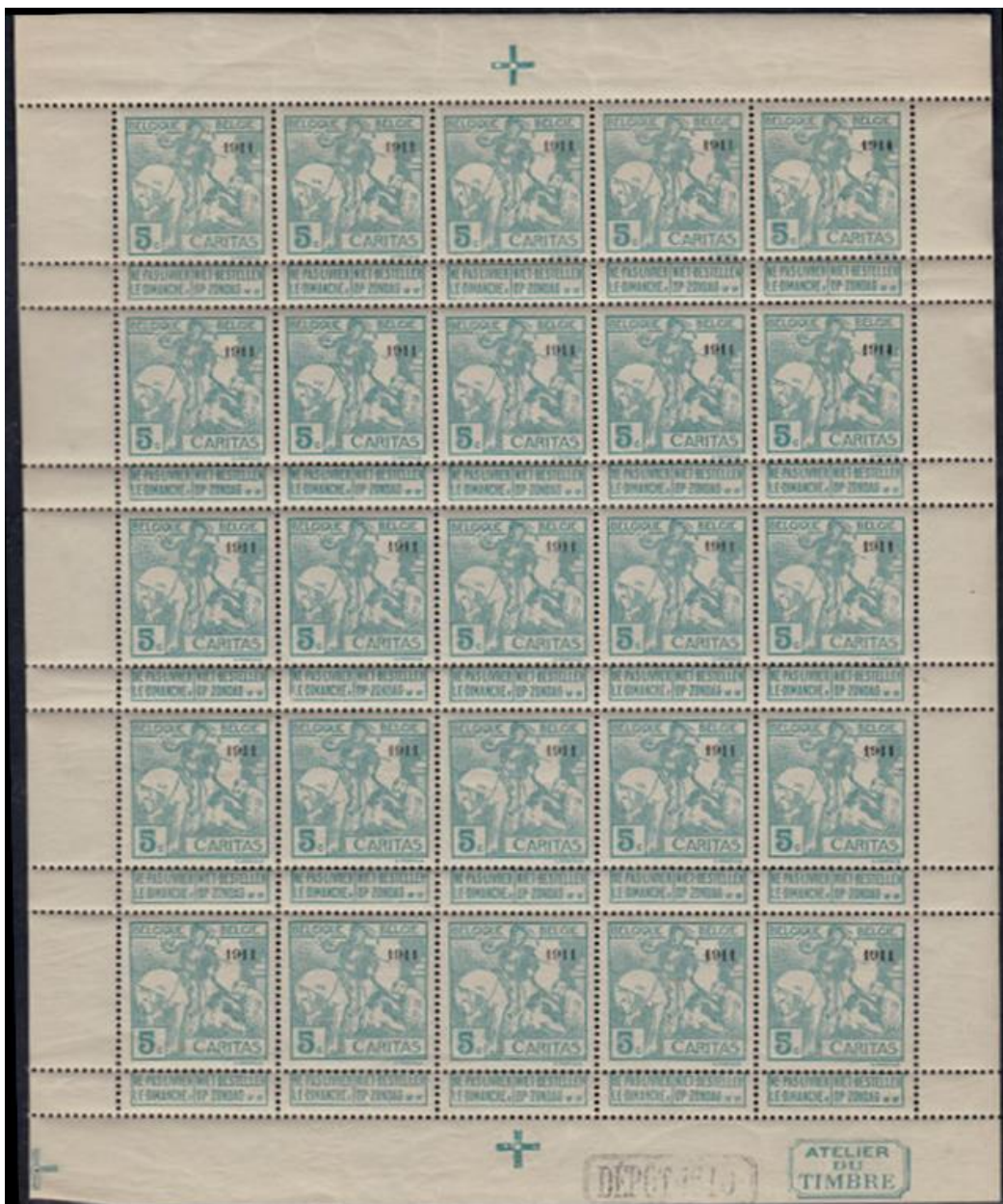
F92



**F94



F96



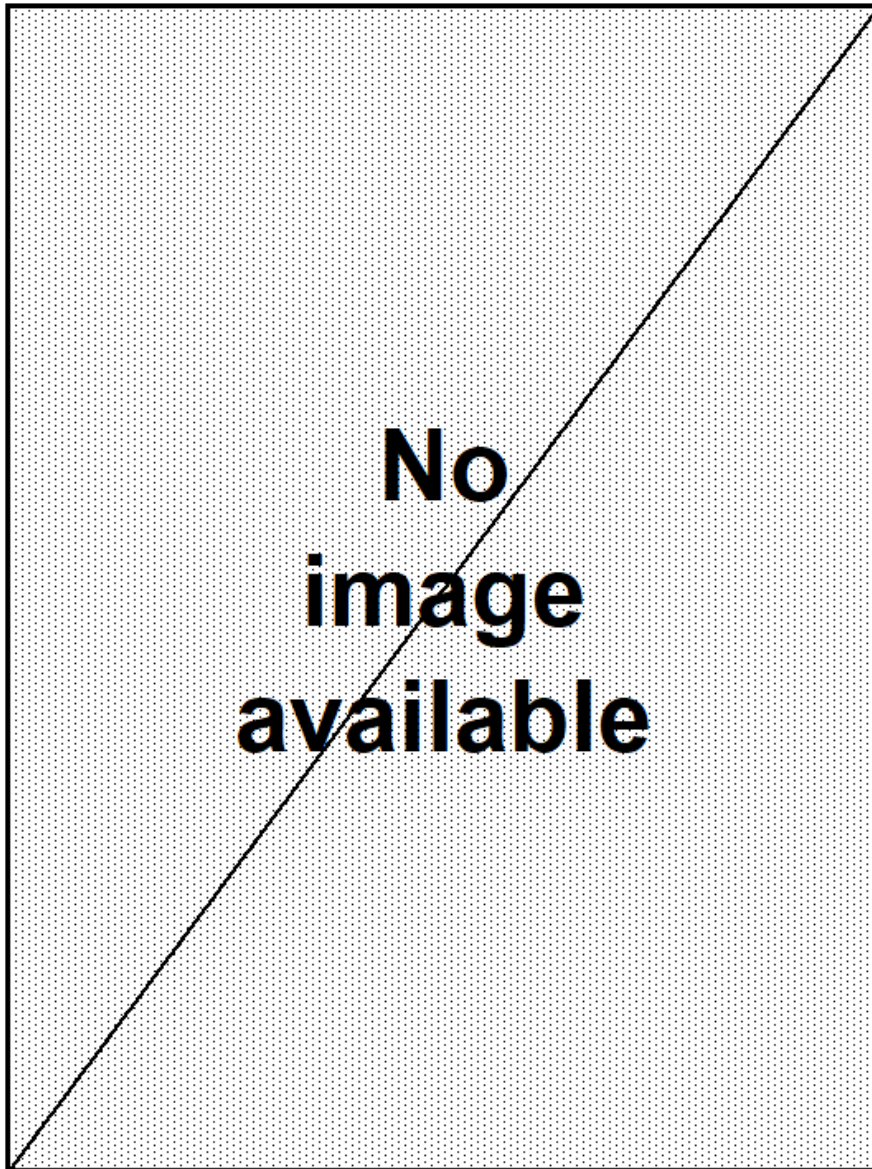
F98



F93



**F95



F97



F99



F100



F102



F104



F106



**F101



F103



F105

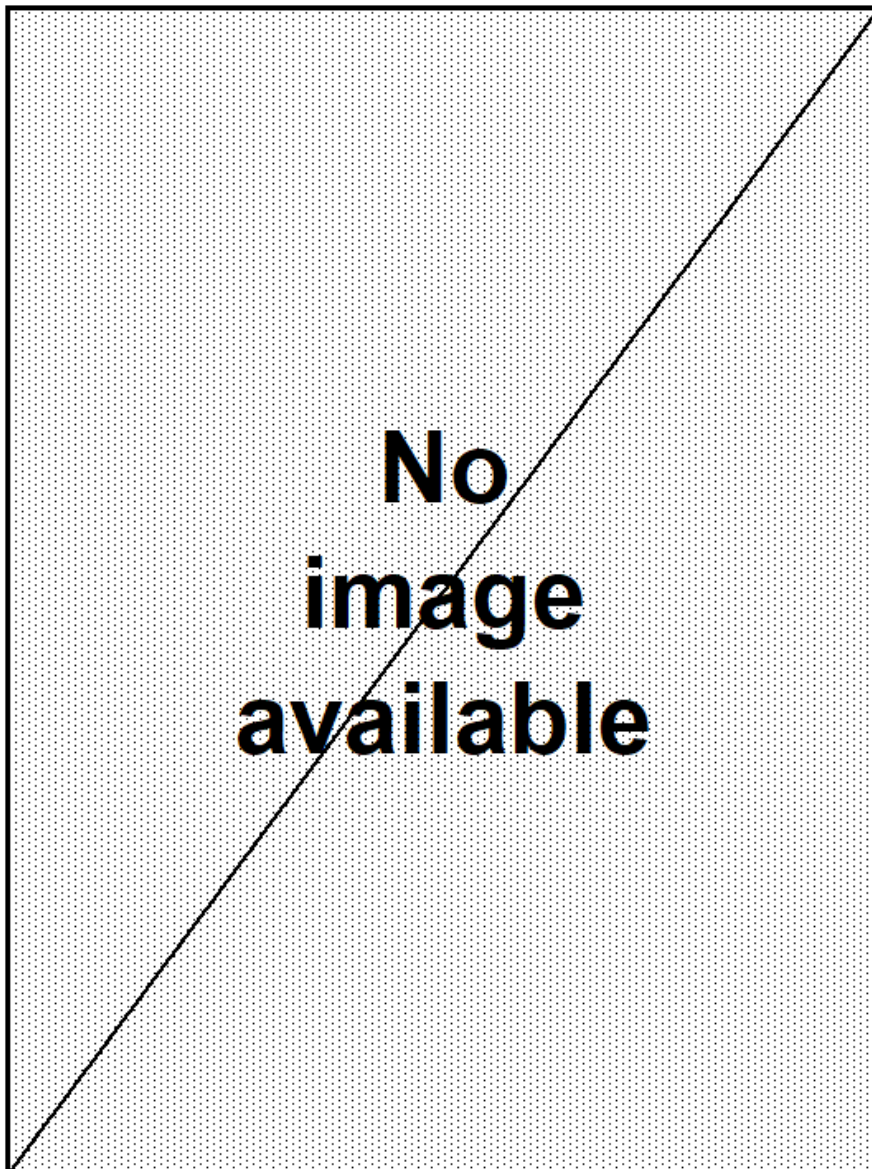


F107

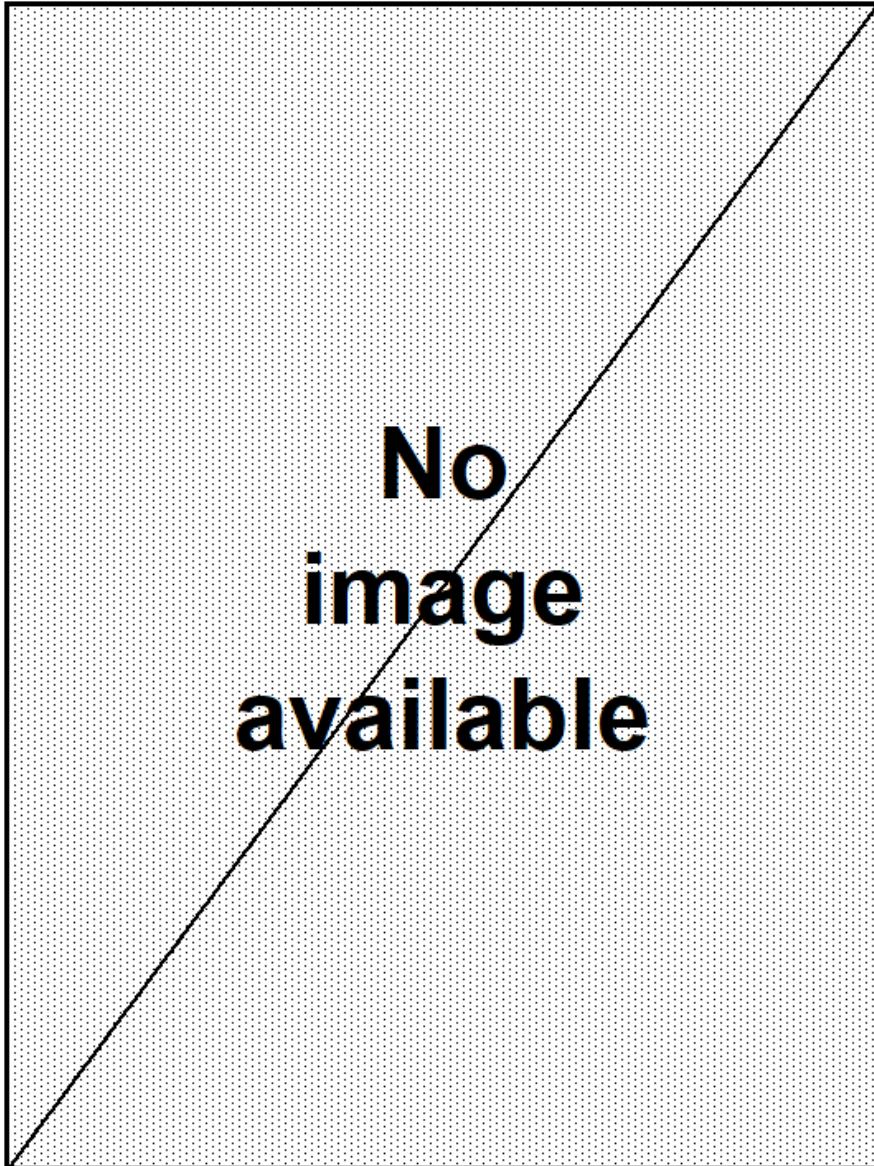
Caritas - TBC - same 2 types with print "CHARLEROI 1911": St-Maarten



****F122**



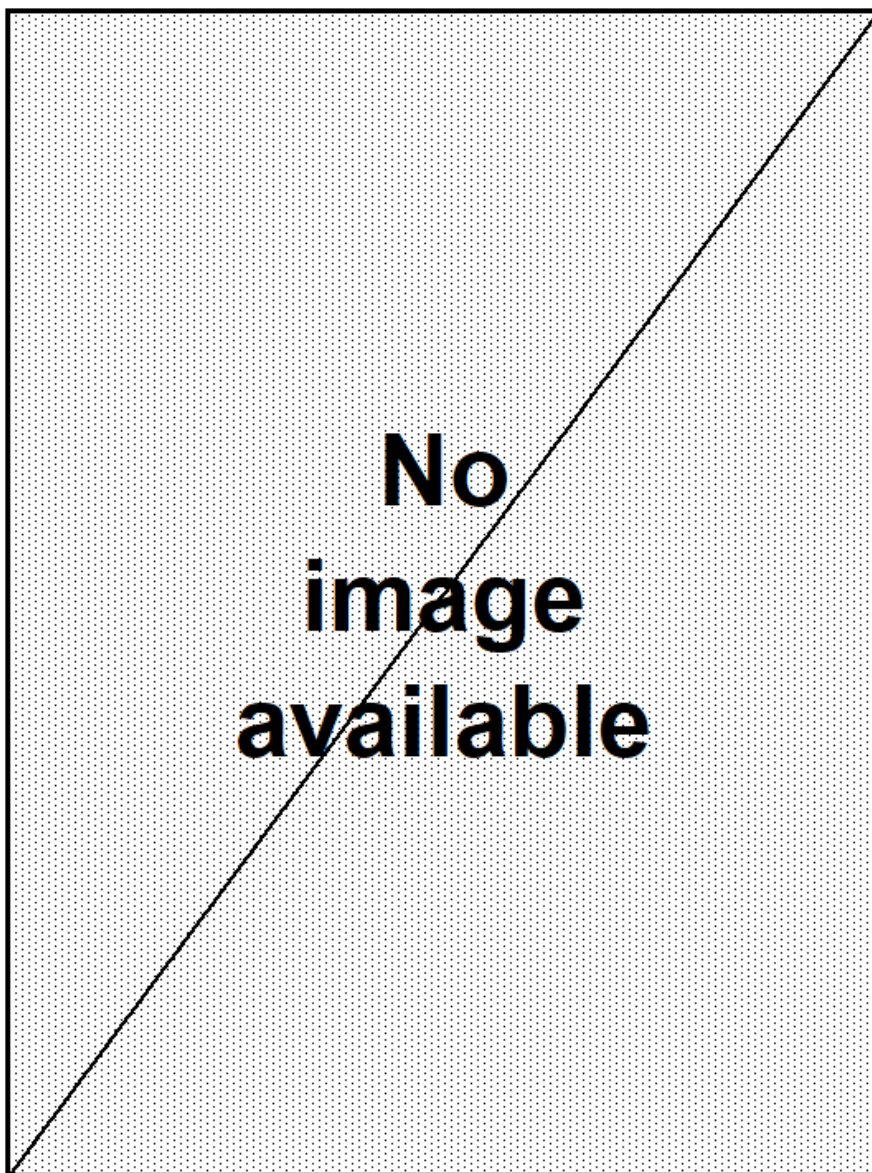
**F126



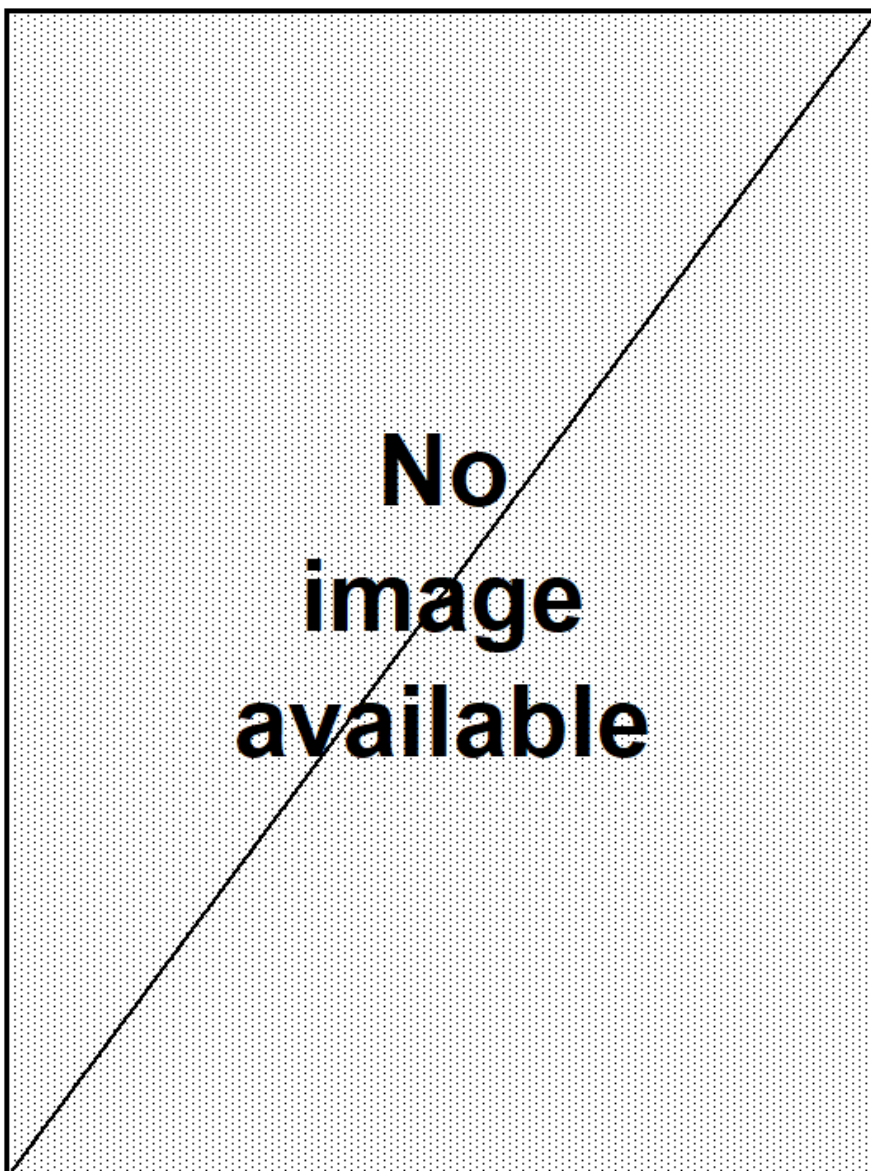
F127



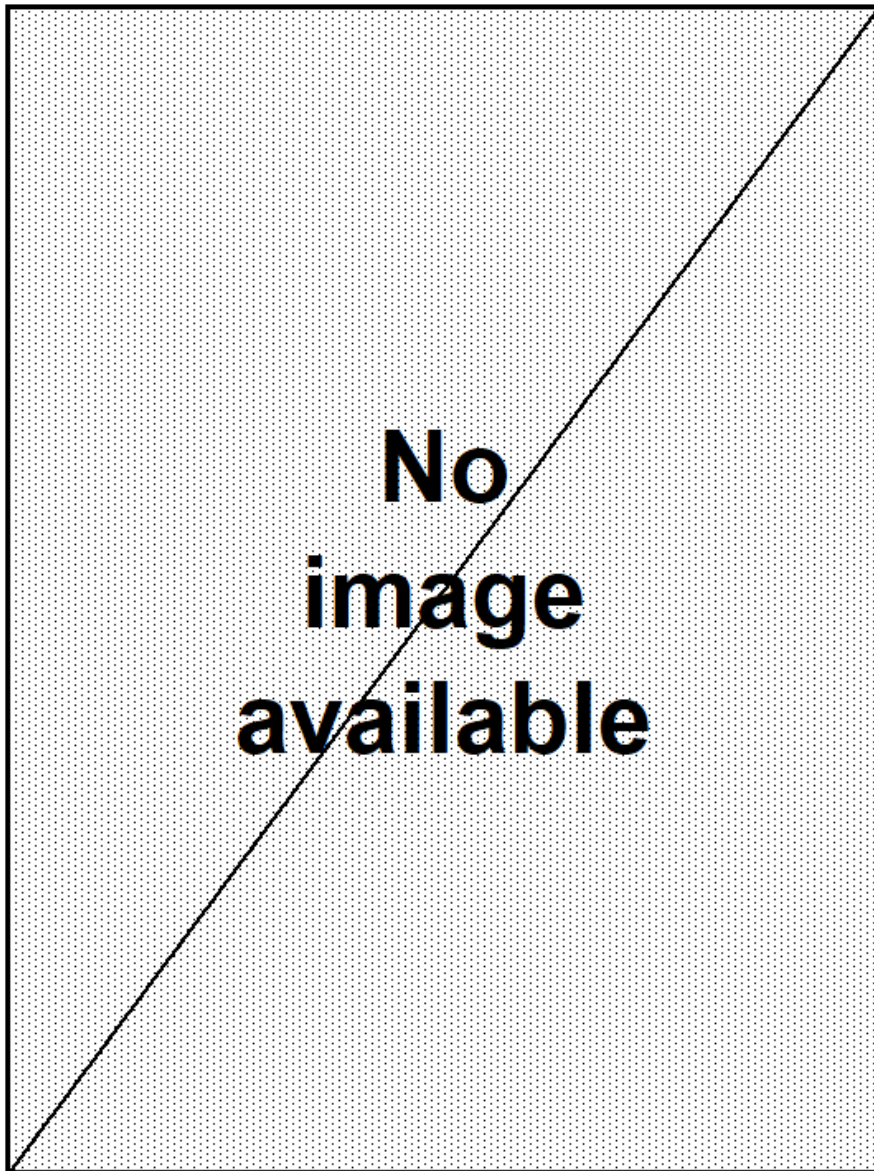
**F128



**F132



**F133



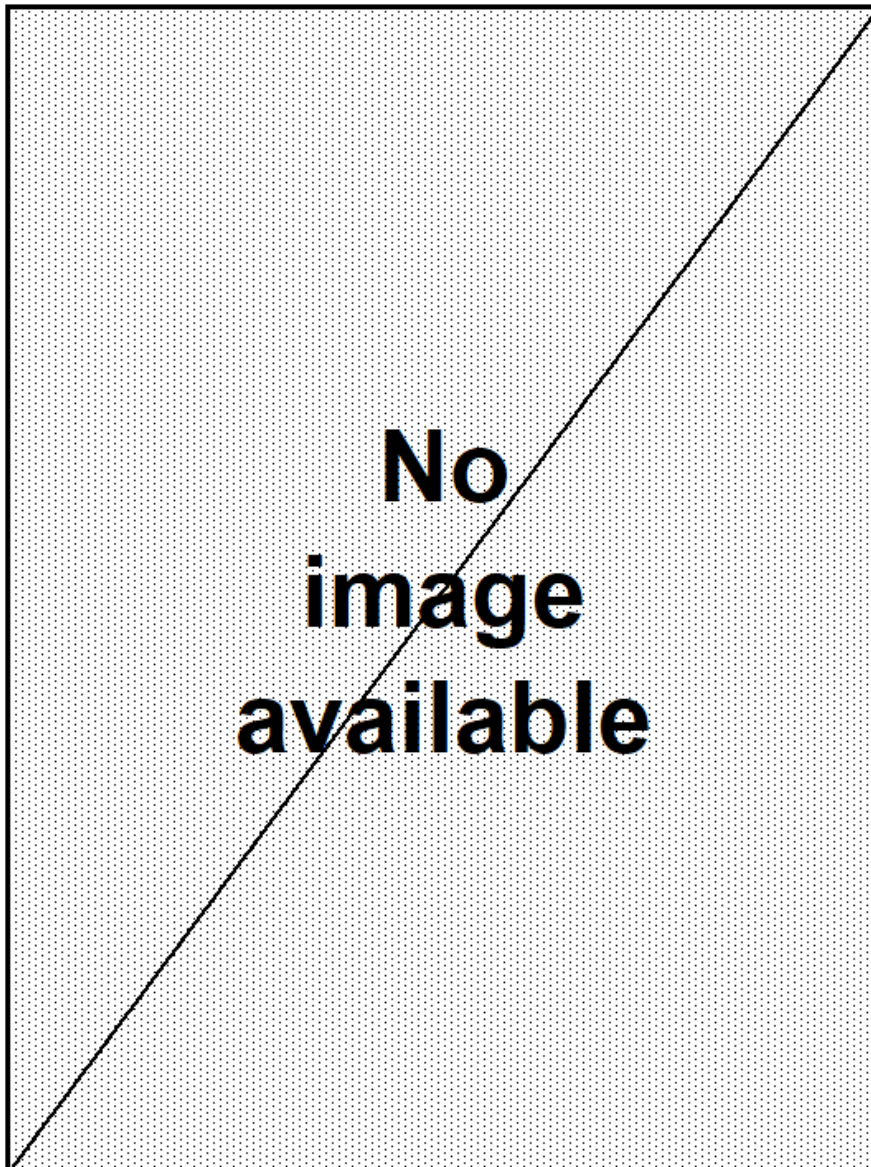
F134



F164A



****F164B**



F168A



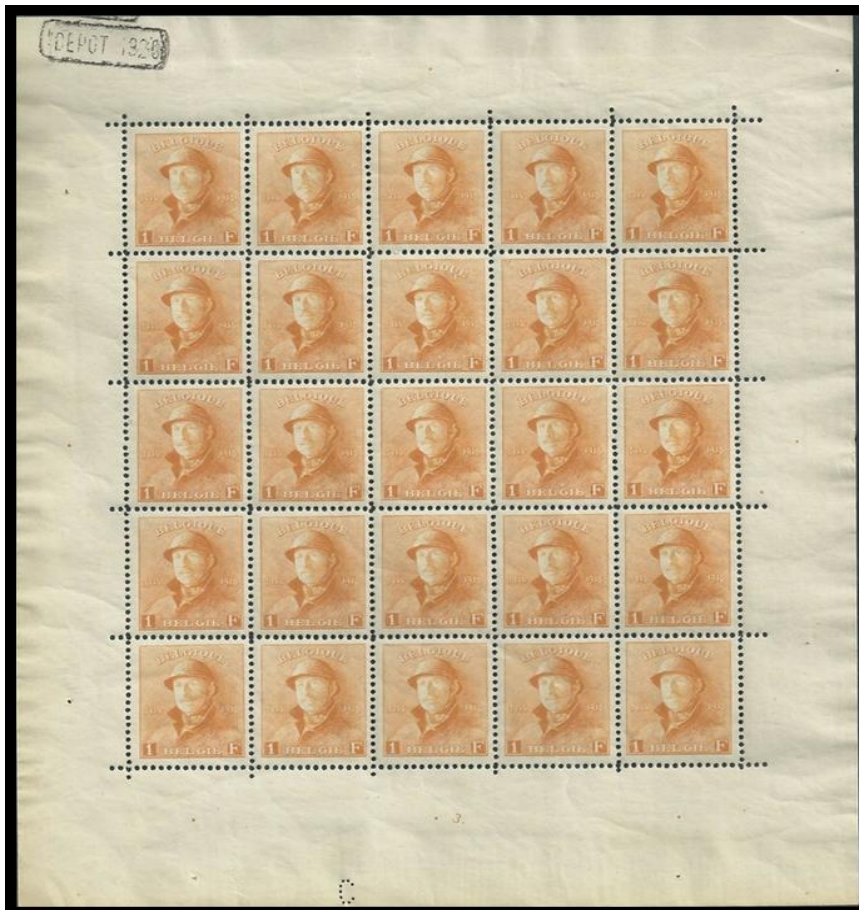
165/178 - King Albert I with helmet - F169A

1919

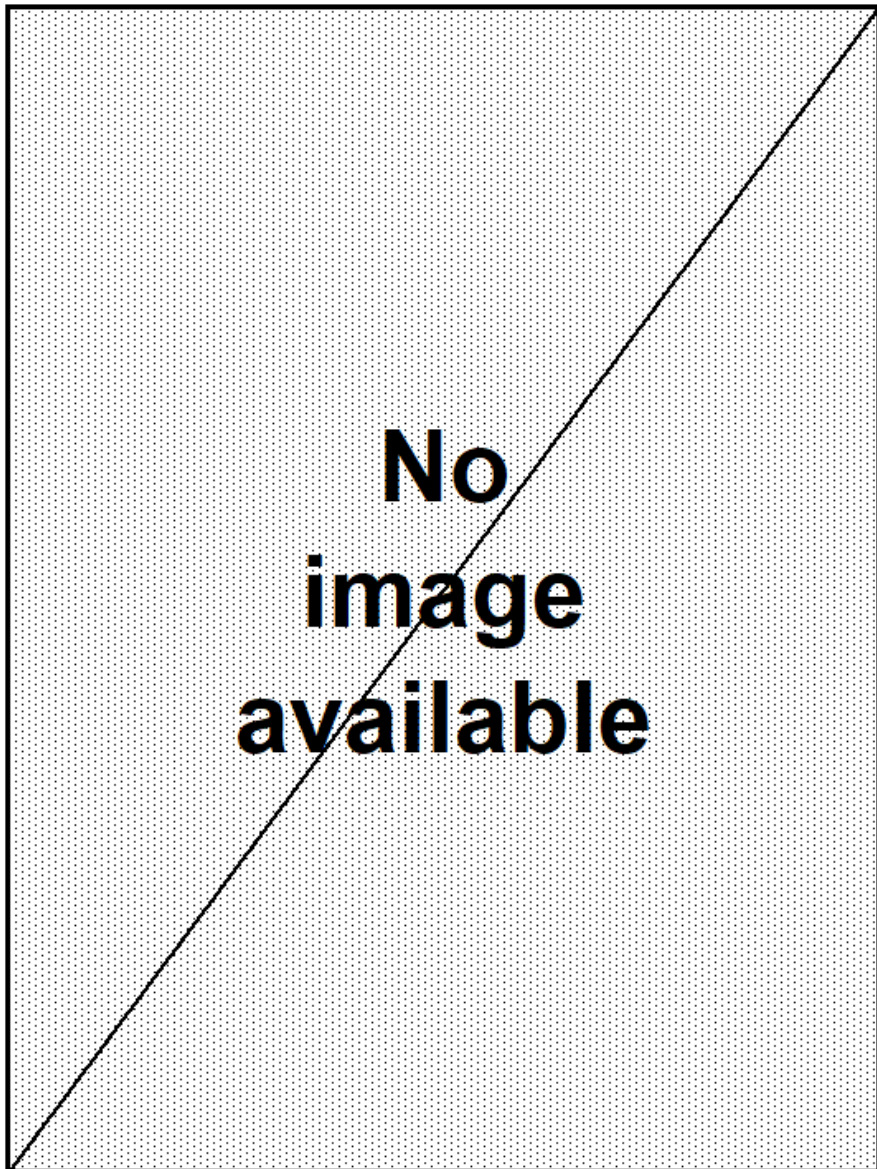
F169A



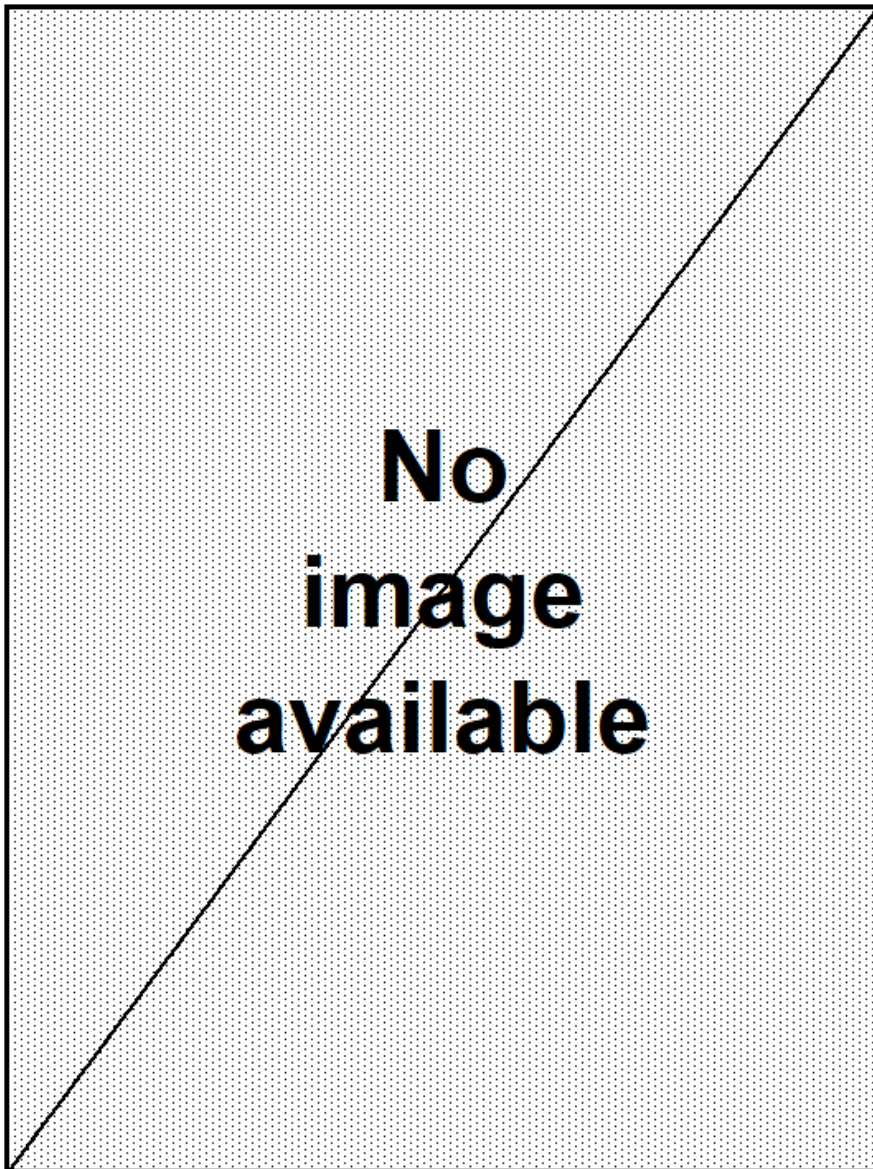
F175



****F176**



**F177



****F178**

