

761/766 - Promotion of Belgian exports

1948

© bpost

Issue: 2/02/1948

Out of service: 30/09/1948

— 761/762: heliography;

Press. procedure: — 763: Typography;

— 764/766: intaglio

— 761/762: 24,35 x 27,83mm;

Dimensions: ± — 764 & 766: 38,26 x 27,83mm;

— 765: 27,83 x 38,25mm

Perforation: 11½

Paper: DP-P1



© bpost

761

60c - Blue Green:
Chemistry



© bpost

762

1.35F - Brown: Art
Craft



© bpost

763

1.75F - Red:
Agriculture



© bpost

764

2.25F - Blue: Traffic



© bpost

766

6.30F - Lilac: Steel
Industry



© bpost

765

3.15F Gray Blue:
Textiles



© bpost

765a

3.15F - Improved
intaglio: Textiles

767/772 - Promotion of Belgian exports - different colors and values

1948

© bpost

Issue: 15/12/1948

Out of service: 30/09/1959

— 767 & 768: heliography;

Press. procedure: — 769: typography;

— 770/772: intaglio

— 767/769: 24,35 x 27,83mm;

Dimensions: ± — 770 & 772: 38,25 x 27,83mm;

— 771: 27,83 x 38,25mm

Perforation: 11½

Paper: DP-P1



© bpost

7671.20F - Brown:
Chemistry

© bpost

7681.75F - Green: Arts
Crafts

© bpost

7692.50F - Wine red:
Agriculture

© bpost

770

3F Lilac: Traffic



© bpost

7726F greenish blue: Steel
Industry

© bpost

771

4F Blue: Textiles

773/776 - For the benefit of the abbey of Achel.

1948

Issue: 5/04/1948**Out of service: 30/09/1949****Press. procedure: heliography****Dimensions: ± — 773+775/776: 27,83 x 38,26mm;
— 774: 38,26 x 27,83mm****Perforation: 11½****Paper: DP-P1****note: There are two varieties of stamp 776**

© bpost



© bpost

77365c+65c - Brown: St.
Benedict

© bpost

7741.35F 1.35F+- Black:
Achel Abbey

© bpost

775+ 3.15F 2.85F - Violet
Blue: St. Benedict
legislature

© bpost

77610F+10F - Lilac: Death
of St. Benedict**777/780 - For the benefit of the Abbey of Chèvremont.**

1948

Issue: 5/04/1948**Out of service: 30/09/1949****Press. procedure: heliography****Dimensions: ± — 777+779/780: 27,83 x 38,26mm;
— 778: 38,26 x 27,83mm****Perforation: 11½****Paper: DP-P1**

© bpost



© bpost

77765c+65c - Blue Green:
St. Begga & castle of
Chevremont.

© bpost

7783.15F+2.85F+- Blue:
O.-L. Chèvremont

© bpost

77910F+10F - Brown:
O.-L. of Mount Carmel

© bpost

7801.35F+1.35F - Wine
red: Basilica of
Chèvremont

781/784 - For the benefit of the Foundation Ed. Anseele (Y1856-Y1938). Stamps from block BL26¹⁹⁴⁸

Issue: 21/06/1948

Out of service: 30/09/1949

Press. procedure: heliography

Dimensions: — stamps: ±24,29 x 41,48mm;
— block BL26: 143 x 80mm

Perforation: 14 x 13½

Paper: DP-P1

note: There are a number of varieties for the stamps and block BL26

© bpost



© bpost



© bpost



© bpost



© bpost

781

65c+35c - Red:
Edouard Anseele

782

90c+60c - Black Gray:
Belfort

783

1.35F+1.15F - Black
Red: Statue Jacob Van
Artevelde

784

3.15F+1.85F - blue:
Edouard Anseele



© bpost

781A/784A

4x coherent

781/784 - For the benefit of the Foundation Ed. Anseele (Y1856-Y1938). Block BL26**1948****Issue: 21/06/1948****Out of service: 30/09/1949****Press. procedure: heliography****Dimensions: — stamps: ±24,29 x 41,48mm;
— block BL26: 143 x 80mm****Perforation: 14 x 13½****Paper: DP-P1****note: There are a number of varieties for the stamps and block BL26**

© bpost

Block BL26

© bpost

785/786 - Monument in Antwerp and Liège

1948

Issue: 4/09/1948

Out of service: 30/09/1949

Press. procedure: rasterdiepdruk

Dimensions: ± 27,23 x 49,09mm

Perforation: 11¾ x 11

Paper: DP-P1

INFO: The monument to the liberation of Antwerp (no. **785**) and the monument of the resistance in Liege (No. **786**).

© bpost

note: There are a number of varieties



© bpost

785

10F+10F - Green: Docker



© bpost

786

10F+10F - Brown: war resistor

787/791 - Tuberculosis & Portraits of the Senate II.

1948

Issue: 15/12/1948

Out of service: 30/09/1949

Press. procedure: — 787/789: heliography;
— 790/791: intaglio

Dimensions: ± — 787/789: 20 x 24,29mm;
— 790/791: 27,23 x 46,96mm

Perforation: — 787/789: 14;
— 790/791: 11¾ x 11½

Paper: DP-P1

© bpost

Cross of Lorraine



© bpost

790

4F+3.25F - Blue:
Isabella of Austria

© bpost

787

20c+5c - Olive green



© bpost

788

1.20F+30c - Lilac



© bpost

789

1.75F+25c - Red



© bpost

791

20F+20F - Teal:
Albrecht, Archduke of
Austria

792/794 - Cultural institutions - stamps from block BL27**1948****Issue: 1/04/1949****INFO:** Benefit from different cultural settings. Paintings by Jordaens.

© bpost

Out of service: 30/09/1950**Press. procedure: heliography****Dimensions: — stamps: ±27,83 x 38,26mm;****— block BL27: 137 x 90mm****Perforation: 11½****Paper: DP-P1****note: There is one variety of stamp 792 and face block BL27**

© bpost

792

90c - Violet: Reading young woman



© bpost

793

1.75F - Carmine: Flute Player



© bpost

794

4F - Bright Blue: Singing old woman

3x coherent

792 + 793 + 794

© bpost

782/84

795/797 - Cultural institutions - stamps from block BL28.

1949

Issue: 1/04/1949**INFO:** Benefit from different cultural settings. Paintings by Van der Weyde.

© bpost

Out of service: 30/09/1950**Press. procedure:** heliography**Dimensions:** — stamps: ±27,83 x 38,26mm;
— block BL28: 137 x 90mm**Perforation:** 11½**Paper:** DP-P1**note:** There is a variety of stamp 795 and block BL28

© bpost

79590c - Brown:
Madonna with child

© bpost

7961.75F - Lila:
The Crucifixion

© bpost

7974F - Blue violet:
Maria Magdalena

3x coherent

795 + 796 + 797

© bpost

795/797

792/794 - Kulturele instellingen - Blok BL27

© (M.Z)

Issue: 1/04/1949

INFO: Benefit from different cultural settings. Paintings by Van der Weyde.

Out of service: 30/09/1950

Press. procedure: heliography

note: There is a variety of stamp 795 and block BL28

Dimensions: — stamps: ±27,83 x 38,26mm; — block BL27: 137 x 90mm

Perforation: 11½

Paper: DP-P1

Block BL27



© bpost

795/797 - Cultural institutions - Block BL28.

Issue: 1/04/1949

INFO: Benefit from different cultural settings. Paintings by Van der Weyde.

Out of service: 30/09/1950

Press. procedure: rasterdiepdruk

note: There is a variety of stamp 795 and block BL28

Dimensions: — stamps: ±27,83 x 38,26mm; — block BL28: 137 x 90mm

Perforation: 11½

Paper: DP-P1

Block BL28



© bpost

© (M.Z)

798/802 - Small coat-of-arms with overprint type 418A / 426 of Y1935

1949

Issue: 18/06/1949
Out of service: 30/09/1959
Press. procedure: Typografie
Dimensions: ± 20,74 x 24,29mm
Perforation: 13½ x 14
Paper: DP-P1

INFO: stamps of Y1935 type (no. **418A**) with overprint and new postage values.

© bpost

note: There is a variety of 801



© bpost

798 (421)

5c to 15c - Black Violet



© bpost

799 (424)

5c to 30c - Tan



© bpost

800 (479)

5c to 40c - Purple



© bpost

801 (721)

20c on 70c - Yellow Green



© bpost

802 (713)

20c on 75c - Purple pink

803/806 - For the benefit of the Foundation Ed. Anseele (Y1856-Y1938) - type 781/784

1949

Issue: 18/06/1949
Out of service: 30/09/1949
Press. procedure: heliography
Dimensions: ± 24,29 x 41,48mm
Perforation: 14 x 13½
Paper: DP-P1

INFO: Type Foundation Ed. Anseele (Nos. **781/784**) with prestamp and f new postage values.

© bpost

note: There are a number of varieties



© bpost

803 (871)

10c on 65c - Red:
Statue of E. Anseele

© bpost

804 (782)

40c on 90c - Black
Gray: Churches and
Belfort

© bpost

805 (783)

80c on 1.3F - Brown
Red: Jacob van
Artevelde

© bpost

806 (784)

1.20F on 3F - Blue:
Statue of Anseele

807/810 - Leopold I - type "Epaulettes" of y1849 - stamps from ► F807 F810**1949****Issue: 1/07/1949****INFO:** Centenary of the issue of the first stamps in Belgium. Leopold I, type Epaulettes Y1849.

© bpost

Out of service: 30/09/1959**Press. procedure: intaglio****Dimensions: ± — stamps: 30 x 34,07mm;****— F807►F810: 230 x 195mm****Perforation: 14 x 13½****Paper: DP-P1**

© bpost

807

90c - Dark green



© bpost

808

1.75F - Purple Brown



© bpost

809

3F - Red



© bpost

810

4F - Blue

810A - Postillion - stamp from F810A**1949****Issue: 1/07/1949****INFO:** Centenary of the first postal stamp in Belgium. Postillion on horseback, train and plane.

© bpost

Out of service: 30/09/1959**Press. procedure: intaglio****Dimensions: ± — stamp: 41,74 x 29,57mm;****— F810A: 245 x 190mm****Perforation: 11½****Paper: DP-P1**

© bpost

810A

50F - Brown: Postiljon

811 - Exhibit Gerard David in Bruges.

1949

Issue: 15/07/1949
Out of service: 30/09/1959
Press. procedure: heliography
Dimensions: ± 27,83 x 38,26mm
Perforation: 11½
Paper: DP-P1

© bpost



© bpost

811

1.75F - Brown: Mary
Magdalene

812 - 75th anniversary of the Universal Postal Union (UPU) - stamp from F812

1949

Issue: 1/10/1949
Out of service: 30/09/1959
Press. procedure: intaglio
Dimensions: ± — stamp: 41,74 x 31,30mm;
— F812: 240 x 190mm
Perforation: 11½
Paper: DP-P1

note: There are two varieties

© bpost



© bpost

812

4F - Blue: Logo

813 - Guido Gezelle

1949

Issue: 15/11/1949
Out of service: 30/09/1950
Press. procedure: heliography
Dimensions: ± 24,29 x 32,59mm
Perforation: 14 x 13½
Paper: DP-P1

INFO: Fifth anniversary of the death of Guido Gezelle (Y1830-Y1899).

© bpost

note: There are a number of varieties



© bpost

813

1.75F+75c - Green:
Guido Gezelle

© (M.Z)

814/822 - Tuberculosis: Flowers with Cross of Lorraine in red and portraits of the Senate IV

1949

Issue: 20/12/1949

Out of service: 30/09/1950

Press. procedure: — 814/817: Typography;
— 818/822: intaglioDimensions: ± — 814/817: 20 x 24,29mm;
— 818/822: 26,67 x 46,96mmPerforation: — 814/817: 14;
— 818/822: 12 x 11½

Paper: DP-P1

© bpost



© bpost

81420c+5c -
Arnica of the Venn

© bpost

81565c+10c -
Eryngo of dunes

© bpost

81690c+10c -
Palm Virgin of wounds

© bpost

8171.2F+30c -
Poppy of fields

© bpost

8181.75F+25c - Orange:
Philip the Good

© bpost

8193F+1.50F Lilac:
Charles V

© bpost

8204F+2F - Blue: Marie-
Christine

© bpost

8213F+6F - Brown:
Charles of Lorraine

© bpost

8228F+4F - Green:
Maria-Theresia

823/825 - For the benefit of the Society Belgium - Great Britain.**1950****Issue: 15/03/1950****Out of service: 30/09/1951****Press. procedure: intaglio****Dimensions: ± — 823/824: 32,59 x 24,29mm;****— 825: 27,83 x 38,26mm****Perforation: — 823/24: 13½ x 14;****— 825: 11½****Paper: DP-P1**

© bpost



© bpost

82380c+20c - Green:
Coats

© bpost

8242.5f+50c - Red:
British tank

© bpost

8254F+2F - Blue:
British memorial to
Hertain**826 - Centenary of the General Savings and Pensions Fund. (ASLK -CGER)****1950****Issue: 1/05/1950****Out of service: 30/09/1959****Press. procedure: heliography****Dimensions: ± 27,83 x 36,52mm****Perforation: 11½****Paper: DP-P1****note: There are two varieties**

© bpost



© bpost

826

1.75F - Logo

827/831 - European Championships in Heyzelstadion. (N° 829 from block BL29)

1950

© bpost

Issue: 1/07/1950**Out of service: 30/09/1959****Press. procedure:** — stamps: intaglio;
— frame of block: typo

— 827/828+830/831: ±25,19 x 31,43mm;

Dimensions: — 829 (from block BL29): ±31,43 x 25,19mm;

— block BL29: 88 x 69mm

Perforation: 13½ x 14**Paper: DP-P1**

© bpost

82720c+5c - Green:
Hurdles

© bpost

8281.75F+25c - Red:
Redemption

© bpost

82990c+10c - Brown:
Javelin Throw

© bpost

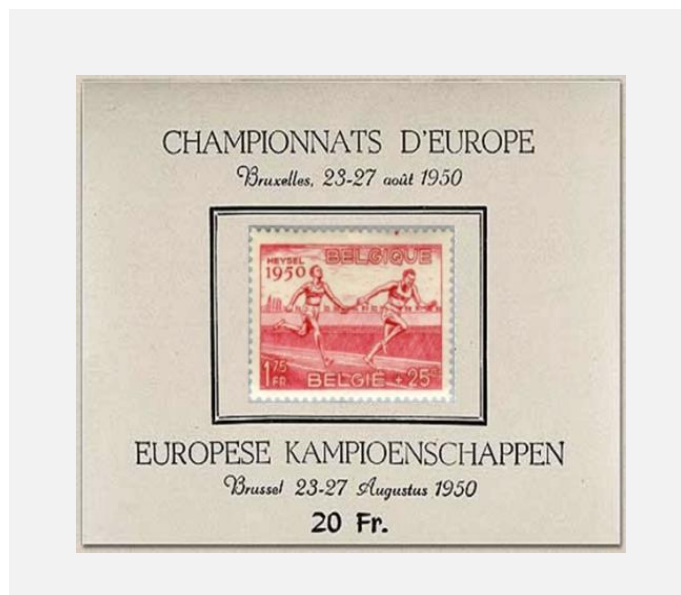
8304F+2F - Blue: Pole
Vault

© bpost

8318F+4F - Green:
Running

827/831 - European Championships in Heyzelstadion. (N° 829 from block BL29)**1950****Issue: 1/07/1950****Out of service: 30/09/1959****Press. procedure:** — stamps: intaglio;
— frame of block: typo**Dimensions:** — 829 (from block BL29): ±31,43 x 25,19mm;
— block BL29: 88 x 69mm**Perforation: 13½ x 14****Paper: DP-P1**

© bpost

block BL29

© bpost

832 - King Leopold III "Open Collar": large format.**1950****Issue:** 29/07/1950**INFO:** Effigy of Leopold III profile to the right. Types of Y1936 no. **428**

© bpost

Out of service: in use**Press. procedure:** heliography**Dimensions:** ± 24,29 x 28,15mm**Perforation:** 14 x 13½**Paper:** DP-P1**note:** There are a number of varieties

© bpost

832

1.75F - carmine brown

833 / 833a - King Leopold III "Open Collar". - type Poortman**1950****Issue:** 29/07/1950**INFO:** Effigy of Leopold III profile to the left. Type N° **429**

© bpost

Out of service: in use**Press. procedure:** intaglio**Dimensions:** ± 24,29 x 28,15mm**Perforation:** 11½**Paper:** — 833: DP-P1;
— 833a: WP-P2

on white paper



© bpost

833

4F - Blue



© bpost

833a

4F - blue on white paper

834/840 - Tuberculosis.

1950

Issue: 20/12/1950
Out of service: 30/09/1951
Press. procedure: — 834/837: Typography;
 — 838/840: intaglio
 — 834/837: 24,74 x 20,74mm;
Dimensions: ± — 838+839: 38,26 x 27,83mm;
 — 840: 27,83x 38,26mm
Perforation: — 834/837: 14 x 13½;
 — 838/840: 11½
Paper: DP-P1

© bpost

note: There is one variety and one curisiteit for 838



© bpost

834

20c+5c - Gentian



© bpost

835

65c+10c - Eriophorum



© bpost

83690c+10c - Siannus:
'purple foxglove'

© bpost

8371.20F+30c -The
immortelle flower

© bpost

8381.75F+25c - Red:
Sana Sijsele

© bpost

8394F+2F - Blue:
Sana Jauche

© bpost

8408F+4F - Green:
Sana Tombeek**841 - Digit on heraldic lion. New type.**

1951

Issue: 15/02/1951
Out of service: in use
Press. procedure: intaglio
Dimensions: ± 20,87 x 24,35mm
Perforation: 11½
Paper: DP-P1

© bpost

note: There 2 varieties



© bpost

841

20c - Blue: Digit on heraldic lion

842/844 - Unesco**1951****Issue: 27/03/1951****Out of service: 30/09/1952****Press. procedure: intaglio****Dimensions: ± — 842+844: 27,83 x 38,26mm;
— 843: 37,5 x 27mm****Perforation: 11½****Paper: DP-P1**

© bpost



© bpost

84280c+20c Green:
Chemical

© bpost

8432.5f+50c - gray brown:
Classroom in Congo

© bpost

8444F+2F - Blue:
Allegory of Peace**845 / 846a - King Leopold III "Open Collar" large format - type N° 428.****1951****Issue: 11/07/1951****Out of service: in service****Press. procedure: heliography****Dimensions: ± 24,29 x 28,15mm****Perforation: 14 x 13½****Paper: DP-P1****INFO:** Effigy of Leopold III profile to the right. Type No. **428** new values

© bpost



© bpost

845

1.2F - Sepia Brown



© bpost

845a

1.2F - Dark Brown



© bpost

846

2.5f - Orange red



© bpost

846a

2.5f - Dark orange red

847 / 848BP3 - King Leopold III "Open Collar" large format. - Type Poortman N° 429**1951****Issue: 15/02/1951****INFO:** Effigy of Leopold III profile to the left. Type no. 429

© bpost

Out of service: in service**Press. procedure: intaglio****Dimensions: ± 24,29 x 28,15mm****Perforation: 11½****Paper: — 847/848: DP-P1;****— 848AP3 / 848BP3: F-P3****note: There are a number of varieties and curiosities**

© bpost

8473F - Bister brown
(11/6/1951)

© bpost

847a

3F - Gellow bister



© bpost

847A

4F - Ultramarine



© bpost

8486F - Carmine
(11/6/1951 type I)

© bpost

848a6F - Carmine (updated cylinder)
(type II)

© bpost

848A

10F - Gray brown



© bpost

848Aa

10F - Brown Violet



© bpost

848Ab

10F - reddish violet



© bpost

848B

20F - Light Red

fosforescend paper P3



© bpost

848AP310F - Gray brown
(1968)

© bpost

848BP320F - Light Red
(1968)

849/859 - Digit on heraldic lion. New type N° 841.**1951****Issue: 1/05/1951****Out of service: in service****Press. procedure: typography****Dimensions: ± 20,87 x 24,35mm****Perforation: 13½ x 14****Paper: DP-P1****note: There are varieties of 851, 854, and 859**

© bpost



© bpost

849

5c - Violet Gray



© bpost

849a

5c - Blue-gray



© bpost

850

10c - Orange



© bpost

850a

10c - Orange red



© bpost

851

20c - Purple



© bpost

851a

20c - Dark purple



© bpost

852

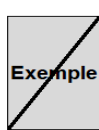
25c - Green



© bpost

853

40c - olive



Exemple

© bpost

853a

40c - Dark Olive



© bpost

854

50c - Blue



© bpost

854a

50c - Light blue



© bpost

854b

50c - Turquoise blue



© bpost

855

60c - Lilac Rose



© bpost

855a

60c - Dark lilac



© bpost

856

65c - Brown Violet



© bpost

857

80c - Emerald



© bpost

857a

80c - Deep emerald



© bpost

858

90c - Light blue



© bpost

858a

90c - Dark blue



© bpost

859

1F - Pink



© bpost

859a

1F - Red Rose

**851P2 / 859A - Digit on heraldic lion. New type. (Type Ns° 849/859 -
Other paper and perforation for N° 859)**

1951

© bpost

Issue: 1/05/1951

Out of service: in service

Press. procedure: typography

Dimensions: ±
— all the stamps: 20,87 x 24,35mm;
— except 859A: 20,36 x 25,66mm

Perforation:
— all the stamps: 13½ x 14;
— except 859A: 13¾ x 13¼

Paper:
— 851P2/859P2: WP-P2;
— 851P6+854P6+855P6+859A: P-P6

note: There is one variety for 854P6

White paper:: WP-P2



© bpost

851P2
20c - Purple



© bpost

854P2
50c - Blue



© bpost

855P2
60c - Lilac



© bpost

859P2
1F - Pink

Papier polyvalent: P6



© bpost

851P6
20c - Purple



© bpost

854P6
50c - Blue



© bpost

855P6
60c - Lilac

Perforation: 16 teeth vertical i.o. 17
T.: 13¾ x 13¼



© bpost

859A
1F - Pink

860/862 - Political prisoners

1951

Issue: 20/08/1951 **INFO:** In
Out of service: 30/09/1952
Press. procedure: heliography
Dimensions: ± — 860 + 862: 27,83 x 38,26mm;
 — 861: 38,26 x 27,83mm
Perforation: 11½
Paper: DP-P1
note: There are two varieties

© bpost



© bpost

860
 1.75F+25c -
 Memorial political
 prisoners.



© bpost

861
 4F+2F - Fort
 Breendonk



© bpost

862
 8F+4F -
 Memorial political
 prisoners.

863/867 - Foundation Queen Elizabeth

1951

Issue: 22/09/1951 **INFO:** For the benefit of the Medical Foundation Queen Elizabeth.
Out of service: 30/09/1952
Press. procedure: heliography
Dimensions: ± 27,83 x 38,26mm
Perforation: 11½
Paper: DP-P1
note: There are a number of varieties

© bpost



© bpost

863
 90c+10c - Dark green



© bpost

864
 1.75F+25c - Wine red



© bpost

865
 3F+1F - Green



© bpost

866
 4F+2F - Blue



© bpost

867
 8F+4F - Black Brown

868/875 - Tuberculosis.**1951****Issue: 27/12/1951****INFO:** Pour la création d'un monument national pour les prisonniers politiques.

© bpost

Out of service: 30/09/1953**Press. procedure: heliography**

— 868/871: 20,87 x 24,35mm;

Dimensions: ± — 872+874: 27,83 x 38,26mm;

— 973+975: 38,26 x 27,83mm

Perforation: 11½**Paper: DP-P1****Cross of Lorraine and Dragon**

© bpost

868

20c+5c - Orange-red



© bpost

869

65c+10c - Violet



© bpost

870

90c+10c - Violet brown



© bpost

871

1.2F+30c - Purple

Castles

© bpost

8721.75F+75c - Brown:
Castle Beersel

© bpost

8744F+2F - Blue:
Castle Lavaux Ste-Anne

© bpost

8733F+1F - Green:
Castle Horst

© bpost

8758F+4F - Gray:
Castle Vèves

876/878 - 25th anniversary cardinalate of Monsignor JE Van Roey -

1953

© bpost

Issue: 1/03/1952

Out of service: 30/09/1953

— 876/877: heliography;

Press. procedure: — 878: intaglio

— bloc BL30: heliography & intaglio combined

Dimensions: — 876/877: ±27,83 x 38,26mm;

— 878: ±55,65 x 38,26mm

Perforation: 11½

Paper: DP-P1

note: There are two varieties of N° 876

INFO: 25th anniversary of the cardinalate of Monsignor JE Van Roey and dedication of the Basilica of the Sacred Heart in Koekelberg.



© bpost

876

1.75F+25c - Brown:
Inside view basilica



© bpost

878

8F+4F - Brown Purple:
Dedication of the Basilica



© bpost

877

4F+2F - Black Blue:
Living basilica

876A/878A - 25th anniversary cardinalate of Monsignor JE Van Roey - Stamps of block BL30

Issue: 1/03/1952

Out of service: 30/09/1953

Press. procedure: bloc BL30: combined intaglio & heliography including the stamps

— 876A/877A: ±27,83 x 38,26mm;

Dimensions: — 878A: ±55,65 x 38,26mm;

— Block BL30: 121 x 72mm

Perforation: 11½

Paper: Block BL30: thin paper including stamps



© bpost

876A

1.75F+25c - Brown:
Inside view basilica



© bpost

878A

8F+4F - Brown Purple:
Dedication of the Basilica



© bpost

877A

4F+2F - Black Blue:
Living basilica

(individual stamps not mentioned in OSC)

876A/878A - 25th anniversary cardinalate of Monsignor JE Van Roey - Block BL30

Issue: 1/03/1952

Out of service: 30/09/1953

Press. procedure: block BL30: combined intaglio & heliography including the stamps

— 876A/877A: ±27,83 x 38,26mm;

Dimensions: — 878A: ±55,65 x 38,26mm;

— Block BL30: 121 x 72mm

Perforation: 11½

Paper: Block BL30: thin paper including stamps

INFO: 25th anniversary of the cardinalate of Monsignor JE Van Roey and dedication of the Basilica of the Sacred Heart in Koekelberg.

Block BL30



© bpost

3 x coherent stamps of block BL30



© bpost

876A/78A

879 / 879AP5 - King Baudouin.**1952****Issue: 14/05/1952****Out of service: in service****Press. procedure: heliography****Dimensions: ± 27,83 x 38,25mm****Perforation: 11½****— 879 / 879A: DP-P1;****Paper: — 879AP3: F-P3;****— 879AP5: P-P5**

© bpost



© bpost

879

50F - Violet Lilac brown Baudouin



© bpost

879A

50F - Gray brown: Baudouin

Fosforecserend paper: P3

Polyvalent paper: P5



© bpost

879AP350F - Gray brown: Baudouin
(1969)

© bpost

879AP550F - Gray brown: Baudouin
(4/03/1977)

880/891 - Congress UPU Brussels - Grand Masters of the Post

1952

Issue: 14/05/1952
Out of service: 30/09/1959
Press. procedure: intaglio
Dimensions: ± 27,83 x 40mm
Perforation: 11½
Paper: DP-P1

INFO: Congress of the UPU in Brussels. Published in honor of the great masters of the postal family of de la Tour and Tassis.

© bpost

— See also special folder (without Nr) published by the Postal Administration: Y1952 —
 for N° 881, 882, 889, 890 en 891

note: There is one variety for N° 880 and one for N° 891



© bpost

88080c - Olive green:
Fr. of Tassis

© bpost

8811.75F - Orange:
Knight J. Baptiste

© bpost

8822F - Brown:
Baron Leonard I.

© bpost

8832.50F - Red:
Lamoral I

© bpost

8843F - Olive green:
Leonard II

© bpost

885

4F - Blue: Lamoral II



© bpost

8865F - Russet:
Alex Eugeen

© bpost

8875.75F - Blue:
Prince Anselme-
François

© bpost

8888F - Gray:
Alexander Ferdinand

© bpost

88910F - Violet:
Charles-Anselme

© bpost

89020F - Brown Gray:
Charles Alexander

© bpost

89140F+10F - Blue-gray:
Castle of Beaulieu

892/897 - Belgian writers + 898/899 - Belgian writers: stamps WITH VIGNETTE

1952

Issue: 5/11/1952

INFO: Belgian writers. For the benefit of the Committee for Cultural Works.

Out of service: 30/09/1953

Press. procedure: heliography

Dimensions: ± — without vignette: 27,83 x 38,26mm;
— with vignette: 54,4 x 38,26mm

Perforation: 11½

Paper: DP-P1

note: There is one variety for 892 and 3 of 891

© bpost



© bpost



© bpost



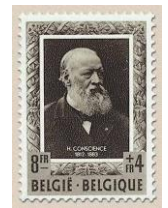
© bpost



© bpost



© bpost



© bpost

892

65c + 30c - Violet:
A. Vermeylen
(1872-1945)

893

80c + 40c - Vert:
K. Van de Woestijne
(1878-1929)

894

90c + 45c - Gris:
H. De Coster
(1827-1879)

895

1.75F + 75c - Carmin:
M. Maeterlinck
(1862-1949)

896

4F + 2F - Bleu:
Emile Verhaeren
(1855-1916)

897

8F + 4F - Marron:
H. Conscience
(1812-1883)

898/899: stamps with & without vignette

INFO:

Additional issues of the series of letters in the form of diptychs. For the benefit of cultural works.
Type no. **896** and **897**.

with vignette

without vignette



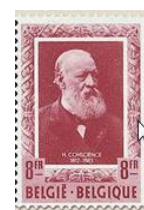
© bpost

898

© bpost

898A

© bpost

899

© bpost

899A

900/907 - Tuberculosis.**1952****Issue: 15/12/1952****INFO:** type de A1951 (868/75), avec l'année 1952 et d'autres valeurs

© bpost

Out of service: 30/09/1953**Press. procedure: intaglio**— **900/903: 20,87 x 24,35mm;****Dimensions: ± — 905: 27,83 x 38,26mm;**— **904+906+907: 38,26 x 27,83mm****Perforation: 11½****Paper: DP-P1**

Cross of Lorraine, and Dragon



© bpost

900

20c + 5c - Brun rouge



© bpost

901

80c + 20c - Vert jaune



© bpost

902

1.20F + 30c - Carmine Lila



© bpost

903

1.50F + 50c - Gris olive

Performances related to the eastern provinces



© bpost

9042F + 75c - Carmine:
Malmédy

© bpost

906

4F + 2F - Bleu: Eupen



© bpost

9078F + 4F - Marron:
Sankt Vith

Castle



© bpost

9053F + 1.5F - Marron:
Burg Reuland

908 - Communication engineer at the RTT, Walthère Dewé**1953**

Issue: 16/02/1953
Out of service: 30/09/1954
Press. procedure: heliography
Dimensions: ± 27,83x 38,26mm
Perforation: 11½
Paper: DP-P1
note: There is one variety

INFO: In favor of the establishment of the monument Thier (Liege) in memory of Walthère Dewée, a heroic figure from the opposition.

© bpost



© bpost

908

2F+1F - Carmine: Walthère Dewe

909/911 - New effigy of H.M. King Baudouin.**1953**

Issue: 10/12/1953
Out of service: in service
Press. procedure: heliography
Dimensions: ± 24,35 x 27,83mm
Perforation: 11½
Paper: DP-P1
note: There is a variety of 909

© bpost



© bpost

909

1.5F - Gray Green



© bpost

910

2F - Carmine



© bpost

911

4F - Blue

912/917 - Marriage of Princess Josephine-Charlotte - Stamp N° 914 from "booklets" (NL, FR)

1953

Issue: 14/03/1953
Out of service: 30/09/1954
Press. procedure: heliography

INFO: Marriage of Princess Josephine-Charlotte with John Hereditary Grand Duke of Luxembourg. The benefit of the Disaster Relief Fund of the Belgian Red Cross.

© bpost

Dimensions: — stamps without tab: ±27,83 x 38,26mm;
 — stamps with tab: ±27,83 x 46,96mm;
 — booklet : 140 x 100mm

Perforation: 11½

Paper: DP-P1

note: There are varieties for 916 & 917

Stamp N° 914 from booklet **B914A** or **B914B**

Although these booklets are the first of their kind, they are not categorized as a booklet (**B ...**), listed here as **914A** & **914B**



© bpost

912

80c+20c - Olive



© bpost

913

1.20F+30c - Brown



© bpost

9142F+50c - Wine red
(see also booklets)

© bpost

915

2.50F+50c - Red Rose



© bpost

916

4F+1F - Blue



© bpost

917

5F+2F - Black Green

914/915 - Marriage of Princess Josephine-Charlotte - stamp 914 from "booklets" (NL & FR) (with tab with tex NL & FR)

Characteristics: see previous page
French priority in tabs in booklet 914A
914+tab on top



© bpost

914taba-FR-t



© bpost

914tabb-FR-t



© bpost

914tabc-FR-t



© bpost

914tabd-FR-t

914+tab on bottom



© bpost

914taba-NL-b



© bpost

914tabb-NL-b



© bpost

914tabc-NL-b



© bpost

914tabd-NL-b

Dutch priority in tabs in booklet 914B
914+tab on top



© bpost

914taba-NL-t



© bpost

914tabb-NL-t



© bpost

914tabc-NL-t



© bpost

914tabd-NL-t

914+tab on bottom



© bpost

914taba-FR-b



© bpost

914tabb-FR-b



© bpost

914tabc-FR-b



© bpost

914tabd-FR-b

918/923 - Tourist Facilities

Issue: 22/06/1953

Out of service: 30/09/1954

Press. procedure: heliography

Dimensions: ± — 918/920: 38,26 x 27,83mm;
— 921/923: 27,83 x 38,26mm

Perforation: 11½

Paper: DP-P1

INFO: Propaganda in favor of the study commission Tourist equipment.

1953

© bpost

note: There is a variety of 920



© bpost

918

80c+20c - Green:
Ostend



© bpost

919

1.20F+30c - Brown:
Bouillon



© bpost

920

2F+50c - Dark brown:
Antwerp



© bpost

921

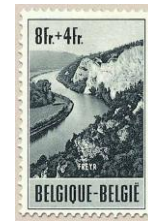
2.50F + 50c -
Vin rouge:
Namur



© bpost

922

4F + 2F - Bleu noir:
Gand



© bpost

923

8F + 4F - Noir:
Freyr, le Lion Rock

924 / 926P3 - New effigy of H.M. King Baudouin «with glasses». Type Marchand

1953

Issue: 10/09/1953

Out of service: in service

Press. procedure: heliography

Dimensions: ± 24,35 x 27,83mm - image: 20 x 25

Perforation: 11½

Paper: — 924/926: DP-P1;

— 924P3 + 926P3: F-P3

note: There are different varieties

© bpost



© bpost

924

1:50 Light



© bpost

924a

1:50 Olive Gray



© bpost

924b

1:50 Black Gray



© bpost

925

2F - Carmine pink



© bpost

925a

2F - Carmine red



© bpost

925b

2F - Blood red



© bpost

926

4F - Light blue



© bpost

926a

4F - Gray Blue



© bpost

926b

4F - Black Blue



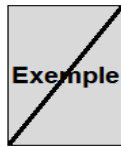
© bpost

926c

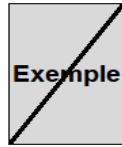
4F - Violet Blue



© bpost

924P31.50F - Light gray
(1967)

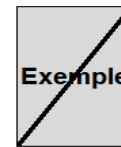
© bpost

924P3a1:50 Olive Gray
(1967)

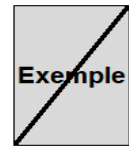
© bpost

924P3b1:50 Black Gray
(08/07/1969)

© bpost

926P34F - Light blue
(1967)

© bpost

926P3a4F - Gray Blue
(1967)

© bpost

926P3b4F - Violent Blue
(1967)

927/929 - European Agency for Youth and Child.

1953

Issue: 26/10/1953

Out of service: 30/09/1954

Press. procedure: heliography

Dimensions: ± 27,83 x 38,26mm

INFO: For the benefit of the European Agency for Youth and Child.

Perforation: 11½

Paper: DP-P1

note: There is a variety of 928

© bpost



© bpost

927

80c+20c - Green



© bpost

928

2.50F+1F - Pink



© bpost

929

4F+1.50F - Gray Blue

930/937 - Tuberculosis.**1953****Issue: 15/12/1953****Out of service: 30/09/1953****Press. procedure: heliography**— **930/933: 20,87 x 24,35mm;****Dimensions: ± — 934/936: 27,83 x 38,26mm;**— **937: 38,26 x 27,83mm****Perforation: 11½****Paper: DP-P1**

© bpost

Cross of Lorraine, and dragon



© bpost

930

20c+5c - Light Blue



© bpost

931

80c+20c - Purple



© bpost

932

1.20F+30c - Sepia



© bpost

933

1.50F+50c - Gray

Scholars have distinguished themselves against TB



© bpost

9342F+75c - Green:
E. Malvoz

© bpost

9353F+1.50F - Red:
C. Forlanini

© bpost

9364F+2F - Blue:
A. Calmette

© bpost

9378F+4F - brown:
R. Koch

938/940 - Passing away of King Albert I**1954****Issue:** 17/02/1954**INFO:** Twentieth anniversary of the death of King Albert I.

© bpost

Out of service: 30/09/1955

Establishment of a monument in Namur.

Press. procedure: heliography**Dimensions:** ± — 938+940: 27,83 x 38,26mm;

— 939: 38,26 x 27,83mm

Perforation: 11½**Paper:** DP-P1**note:** There are two varieties for 939 and one for 940

© bpost

9382F+50c - Orange red:
Statue Namur

© bpost

9404F+2F - Light blue:
Monument

© bpost

9399F+4.50F - Black:
Marche-les-Dames**941/942 - Digit on heraldic lion. Overprint with value change: New type N° 849****1954****Issue:** 1/01/1954**Out of service:** Hors d'usage**Press. procedure:** typography**Dimensions:** ± 20,87 x 24,35mm**Perforation:** 13½ x 14**Paper:** DP-P1

© bpost



© bpost

941

20c on 65c - Brown Violet



© bpost

942

20c on 90c - Blue

943/945 - Political prisoners in Breendonk.**1954****Issue:** 1/04/1954**Out of service:** 30/09/1955**Press. procedure:** heliography**Dimensions:** ± — 943+945: 27,83 x 38,26mm;

— 944: 38,26 x 27,83mm

Perforation: 11½**INFO:** Inauguration of the national monument for political prisoners in Breendonk.

© bpost

note: There is a variety of 944**Paper:** DP-P1

© bpost

7432F+1F - Red:
Monument

© bpost

9444F+2F - Brown:
Fort Breendonk

© bpost

9459F+4.50F - Green:
Monument

946/951 - Beguinage of Bruges

1954

Issue: 15/05/1954

INFO: Pour la restauration du béguinage de Bruges.

Out of service: 30/09/1955

© bpost

Press. procedure: heliography

— 948/950: 27,83 x 38,26mm;

Dimensions: ± — 946/947: 38,26 x 27,83mm;

— 951: 38,26 x 55,65mm

Perforation: 11½

Paper: DP-P1

note: There is a variety of 951



© bpost

946

80c+20c - Green:
beguinage



© bpost

948

4F+2F - Violet:
beguinage



© bpost

947

2F+1F - carmine pink:
beguinage



© bpost

949

7F+3.50F - Pink
Purple: beguinage



© bpost

951

9F + 4.5F - Bleu:
N.D. de la vigne



© bpost

950

8F+4F - Purple brown:
beguinage

952/954 - Rotary International

1954

Issue: 10/09/1954
Out of service: in service
Press. procedure: intaglio
Dimensions: ± 38,26 x 27,83mm
Perforation: 11½
Paper: DP-P1

INFO: Fiftieth anniversary of Rotary International and fifth Conference of European sections in Ostend.

© bpost



© bpost

952

20c - Red:
Emblem and map of Europe



© bpost

953

80c - Green:
Mercury and the sea



© bpost

954

4F - Blue:
Emblem with two world-halves

955/960 - Tuberculosis.

1954

Issue: 1/12/1954
Out of service: 30/09/1955
Press. procedure: intaglio
Dimensions: ± — 955/958: 24,35 x 20,87mm;
 — 959/960: 38,26 x 27,83mm
Perforation: 11½
Paper: DP-P1

© bpost

children Head



© bpost

955

20c+5c - Green



© bpost

956

80c+20c - Black violet



© bpost

957

1.20F+30c - Brown



© bpost

958

1.50F+50c - Violet

The blind and the paralytic



© bpost

959

2F+75c carmine pink



© bpost

960

4F+1F - Blue